

GROUNDWORKS AND TOPSOILING.

* BY MAIN CONTRACTOR UNLESS OTHERWISE AGREED.

- ANY 'ON-SITE' TOPSOIL INTENDED FOR RE-USE IS TO BE STOCKPILED FREE OF TURF/WEED/DEBRIS. QUALITY OF MATERIAL MAY INFLUENCE SUITABLE AREAS FOR RE-USE - CONSULT THE SUPERVISING OFFICER BEFORE RE-SPREADING.
- ANY EXISTING PAVING/HARD SURFACES TO BE PROPERLY REMOVED FROM AREAS TO BE LANDSCAPED. ANY VOIDS FILLED WITH CLEAN SUBSOIL OR TOPSOIL - NOT RUBBLE.
- SUBSOIL TO BE EXCAVATED AS REQUIRED TO ALLOW NEW TOPSOIL DEPTHS TO BE PROVIDED.
- ANY SURPLUS MATERIAL ARISING FROM THE ABOVE OPERATIONS TO BE DISPOSED OF AS DIRECTED BY THE SUPERVISING OFFICER.
- BASE OF EXCAVATIONS TO BE PROPERLY DECOMPACTED TO ALLOW FREE DRAINAGE. - WATERLOGGED AREAS AT COMPLETION WILL NOT BE ACCEPTED.
- IN THE VICINITY OF EXISTING TREES (BENEATH CANOPY SPREAD) - WORKS ARE TO BE CARRIED OUT BY HAND TO PREVENT UNDOE DAMAGE TO ROOTS. FAMILIARITY WITH B.S.5837:2012 IS ESSENTIAL.
- CONSULT THE SUPERVISING OFFICER IF IN DOUBT.
- SPREAD TOPSOIL TO BACKFILL AND BRING TO FINISHED LEVELS :
GRASSED AREAS - 100 MM MIN DEPTH.
NATIVE WOODLAND MIX AREAS 300 MM MIN DEPTH (HEDGES)
TREE PITS - BARE ROOT UP TO APPROX 14/16 SIZE 1 X 1 X 1M MIN - ROOTBALL/LARGE C.G. ABOVE 14/16 1.5 X 1.5 X 1.5M.
- ANY IMPORTED TOPSOIL TO BE TO B.S.3882 [DOCUMENTARY EVIDENCE THAT SOIL COMPLIES TO BE PROVIDED IF REQUESTED].
- TOPSOILED AREAS TO BE LEFT IN A CLEAN, EVENLY GRADED AND UNCOMPACTED STATE PRIOR TO ACCESS BY THE LANDSCAPE CONTRACTOR.
- ANY VARIATION TO THE ABOVE TO BE AGREED BEFORE WORKS BEGIN.

GENERAL NOTES

- THE LANDSCAPE CONTRACTOR IS TO CHECK THE POSITIONS OF ALL SERVICES (EXISTING AND 'AS-BUILT') WITH THE MAIN CONTRACTOR PRIOR TO EXCAVATING FOR TREES/SHRUBS - PARTICULARLY WHERE PLANTING OCCURS WITHIN SERVICE ZONES. CONSULT THE S.O. IF CONFLICT ARISES.
- PROPOSED TREE POSITIONS TO BE CONFIRMED BY THE STRUCTURAL ENGINEER RELATIVE TO GROUND CONDITIONS/FOUNDATION DESIGN OF BUILDINGS/EXTERNAL WALLS. CONSULT THE S.O. IF CONFLICT ARISES.
- GRASSED AREAS TO BE - GOOD QUALITY MEADOW TURF.
- WEED-FREE CHERMANTURF.
- SEEDTURF-AS SHOWN ON PLAN.
- WHERE GRASS ADJUTS BUILDINGS - MOWING MARGIN TO BE TO SEPARATE ARCHITECTS DETAIL.
- A 50MM LAYER OF MEDIUM GRADE FOREST BARK MULCH (75MM MAX PARTICLE SIZE) IS TO BE SPREAD OVER ALL NEW PLANTED AREAS AT COMPLETION. SOIL GRADED SMOOTH BEFORE SPREADING.
- PLANTS NOT TO BE BURIED. CHECK BARK TYPE IF NECESSARY TO ENSURE CONTINUITY WITH EXISTING AREAS.
- ROUTINE MAINTENANCE FOLLOWING PRACTICAL COMPLETION (TO INCLUDE 12 MONTHS DEFECTS LIABILITY) :
- IN ACCORDANCE WITH SEPARATE AA SPECIFICATION.
- TO BE AGREED SEPARATELY AND APPROVED BEFORE PROCEEDING.
- FOR DETAILS OF PAVINGS/WALLS/FENCES ETC-SEE SEP ARCHITECTS DRGS.
- INFORM THE S.O. IF IT IS APPARENT THAT ANY AREAS CANNOT BE BUILT AS SHOWN - PLANT QUANTS/SPECIES MAY NEED ADJUSTMENT TO SUIT.
- ANY 'SURPLUS' AREAS ARE NOT TO BE TOPSOILED UNLESS AGREED IN ADVANCE TO ALLOW CORRECT PLANTS TO BE SPECIFIED - OTHERWISE ANY SUCH AREAS ARE TO BE PAVED TO ARCHITECTS DETAILS.
- * FOR ADDITIONAL DETAILS OF EXISTING TREES - SEE SEPARATE ARBORICULTURAL REPORT.

HIGH STREET

ECOLOGICAL ENHANCEMENTS (BIODIVERSITY):

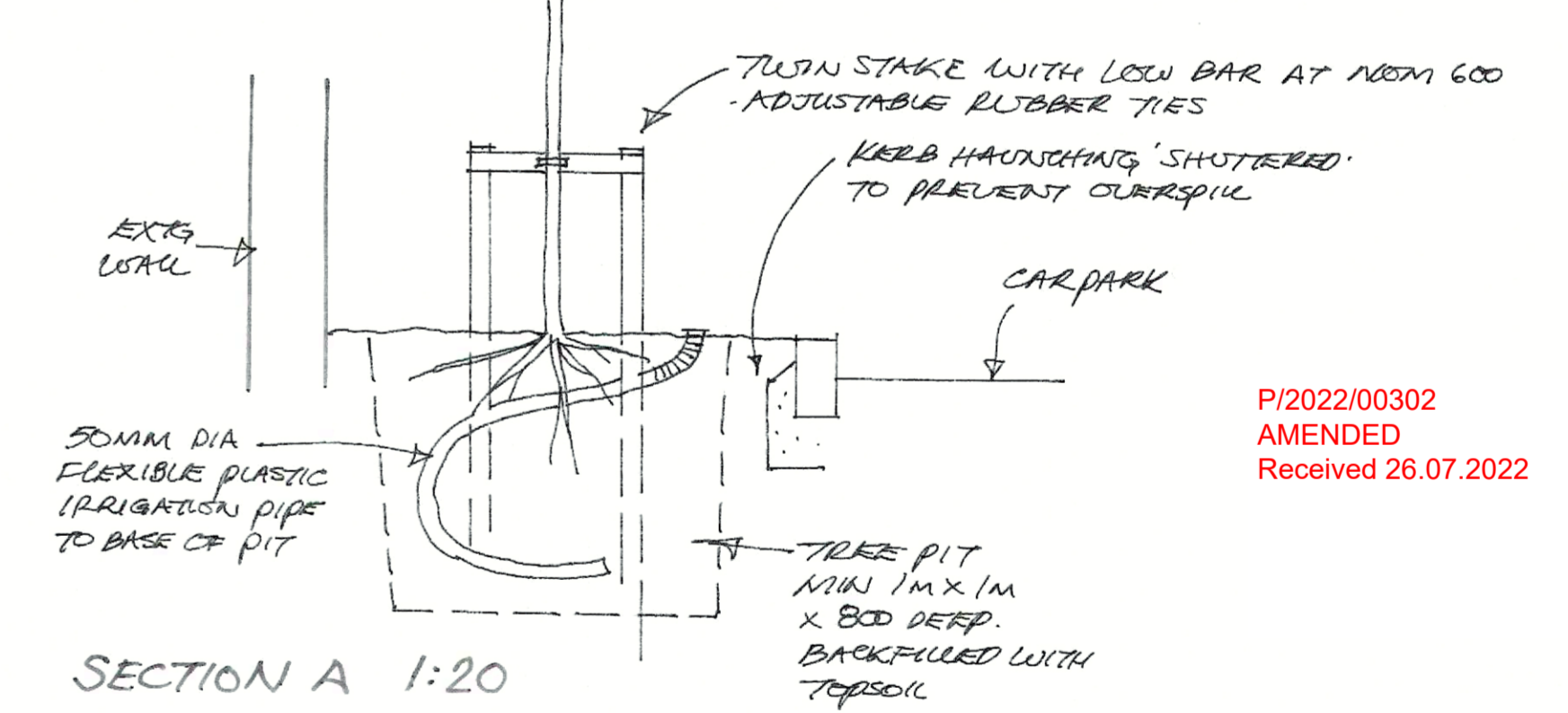
- 1 NO SPARROW TERRACE (SCHWEGELER).
- 1 NO SINGLE (32mm) HOSE BIRD BOX (SCHWEGELER 1B).
- 1 NO WALL MOUNTED BAT BOX (SCHWEGELER 1F).
- ALL MOUNTED ON BUILDING SIDES/REAR IN LOCATIONS AS PER SUPPLIERS REC'S (ORIENTATION).
- 1 NO LOG PILE (HYBRACALUA) USING TIMBER RECOVERED FROM EXISTING TREE REMOVAL - OCCUPYING AN AREA OF NOM 2 x 1.2 (x 300 HIGH) BENEATH CANOPY OF EXISTING TREE. LOGS TO BE NOM 300 DIA X 1M LONG SELLERLY STACKED AND/OR SPIKED TOGETHER.
- LOG PILE TO INCLUDE 1 NO SCHWEGELER HEDGEBETH 'DOME' SET AMONGST LOGS (ACCESS HIDDEN BUT NOT OBSTRUCTED).

SCHEDULE OF PLANTING

TOTAL NO	SPECIES	SIZE	POT SIZE
60	ACER CAMPESTRE	60/75	0.G.
1	BUDDEIA DAVIDII	60/75	5
24	BERBERIS 'AMSTELREEM'	30/45	3
60	CRATAEGUS MONOGYNA	60/75	0.G.
55	CORYLLUS AVELLANA	60/75	0.G.
10	CISTUS 'SILVER PINK'	30/45	3
25	FAGUS SYLVATICA	60/75	0.G.
32	HYPERICUM MOSERIANUM	30/45	3
15	HEBE SUTHERLANDII	25/35	3
34	HEDERA HELIX	45/60	2
23	LAMNADICIA 'HIDCOTE'	15/25	2
25	LIGUSTRUM VULGARE	45/60	3
23	NEPETA MUSSINI	15/25	2
12	OLEARIA HAASII	30/45	3
20	POTENTILLA 'ELIZABETH'	30/45	3
1	RIBES SANGUINEA	60/75	5
14	SPIRAEA 'GOLD MOUND'	25/35	3
35	SKIMMIA RUBELLA	30/45	3
45	VIBURNUM OPULUS	60/75	0.G.

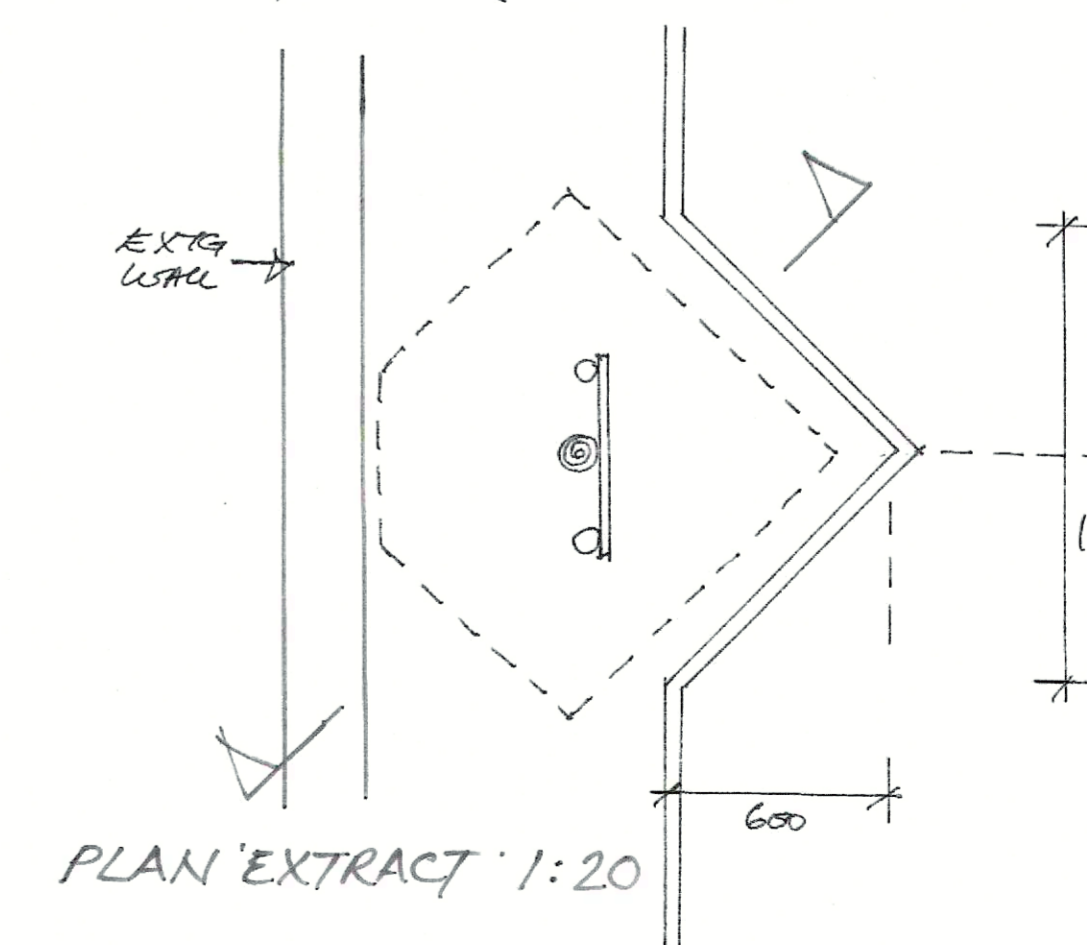
TREES	SPECIES	SIZE	POT SIZE
2	ACER 'ELSRJK'	H. STD 12/14 CM	0.G.
2	CRATAEGUS LAEVIGATA		
1	MALLUS SYLVESTRIS		
2	PRUNUS PADUS		

- O.G. = OPEN GROUND (BARE ROOT) - SUBJECT TO SEASON.
- ANY TREES/SHRUBS THAT DO NOT MEET WITH THE SPECIFICATION WILL BE REJECTED AT PRACTICAL COMPLETION (REPLACED WITHIN 14 DAYS).
- SUBSTITUTIONS MAY BE ACCEPTED IF AGREED MIN 21 DAYS BEFORE WORKS ON SITE.
- * CONSULT THE S.O. IF IN DOUBT AS TO THE REQUIREMENTS OF THE SCHEDULE/DRAWING.



SECTION A 1:20

- TO ACCOMMODATE TREE PLANTINGS IN CAR PARKING (3 LOCATIONS).



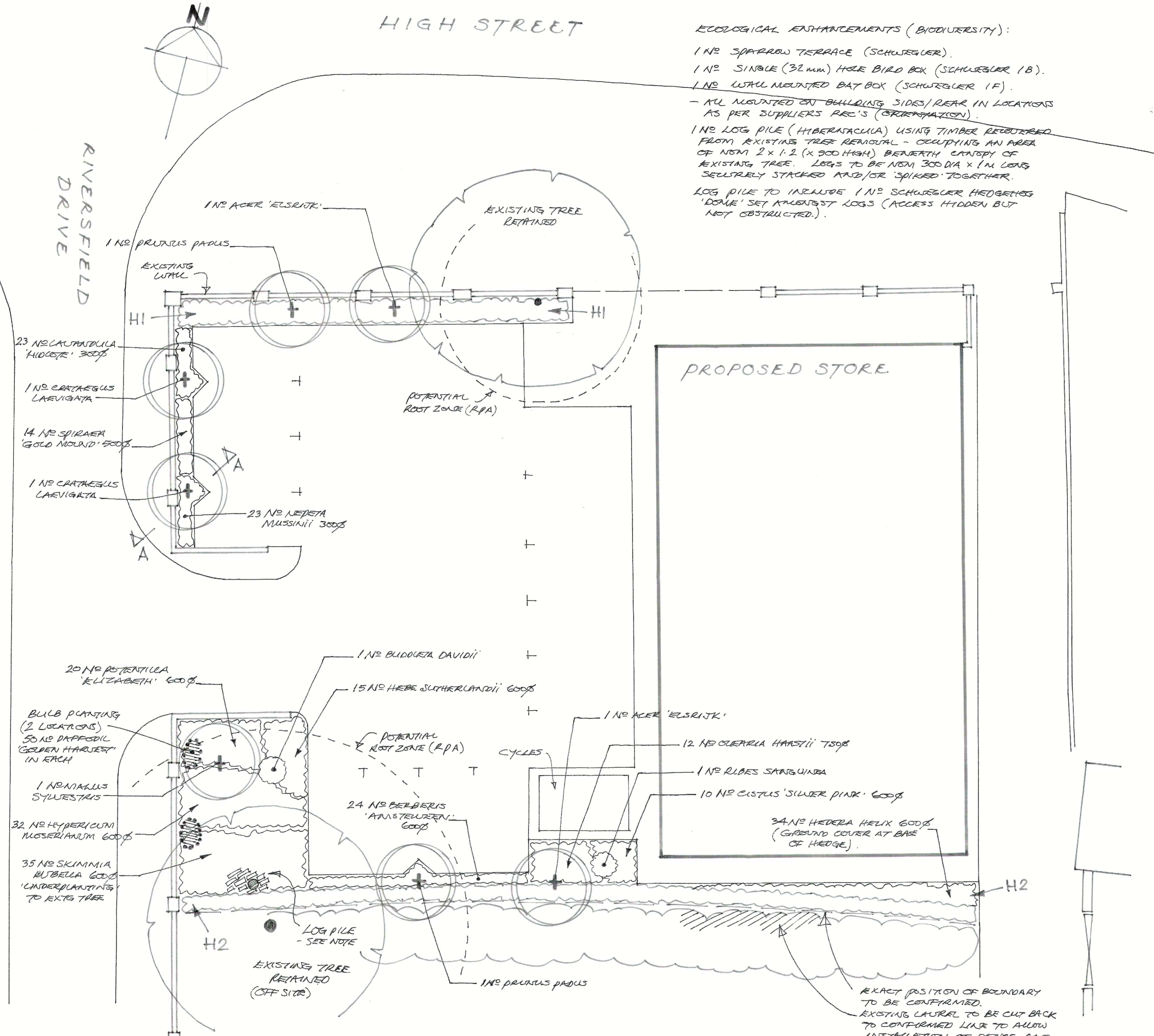
PLAN 'EXTRACT' 1:20

PROPOSED Co-OP STORE
HIGH STREET
ROCESTER
UTTOXETER

Landscape Proposals

1:100 JULY 22 DRG No. 1

MARTIN F. HOLLAND cml
LANDSCAPE DESIGN CONSULTANT



NEW NATURE HEDGE PLANTINGS:

- H1
20 CRATAEGUS MONOGYNA
20 ACER CAMPESTRE
15 CORYLLUS AVELLANA
15 VIBURNUM OPULUS
10 LIGUSTRUM VULGARE
10 FAGUS SYLVATICA
- H2
40 CRATAEGUS MONOGYNA
40 ACER CAMPESTRE
40 CORYLLUS AVELLANA
30 VIBURNUM OPULUS
15 LIGUSTRUM VULGARE
15 FAGUS SYLVATICA

TO BE PLANTED IN 2 ROWS
450 APART, PLANTS AT 450'S
STAGGERED, RANDOM MIX IN
GROUPS OF 5 NO OF ANY ONE
SPECIES EXCEPT LIGUSTRUM
WHICH ARE TO BE EVENLY
DISTRIBUTED THROUGHOUT.
HEDGES MAINTAINED AT
1.5M HIGH WHEN ESTABLISHED.

EXACT POSITION OF BOUNDARY
TO BE CONFIRMED.
EXISTING LAUREL TO BE CUT BACK
TO CONFIRMED LINE TO ALLOW
INSTALLATION OF FENCE AND
NEW LANDSCAPING.